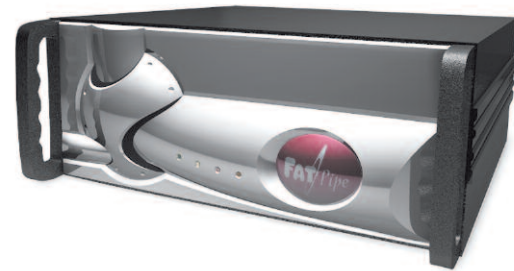


MPVPN

FatPipe MPVPN takes any VPN and makes it up to 9 times more secure and 3 times more reliable, redundant and fast. MPVPN comes in three standard speeds with higher speeds available upon request.



2 Mbps

LOAD BALANCING

- Round Robin
- Response Time
- Fastest Route

MANAGEMENT

- Policy Routing
- Basic Firewall
- Java interface
- Network configuration
- Emergency paging and e-mail alerts
- Automatic failover
- Speed Chart and Speed Meter
- SNMP ready
- On Failure

SECURITY

- Inherent NAT-based Firewall
- Reverse Mapping

WARRANTY

- 1 year full hardware warranty
- Includes 90 days of free technical support

DIMENSIONS

- 1U Industry standard chassis: 2.75"H x 12.5"W x 10.75"D (6.985cm H x 31.75cm W x 27.305cm D)

WEIGHT

- 24.5 lbs (10.89kg)

NETWORK INTERFACE

- Four 10/100 BASE Fast Ethernet (Three enabled and one disabled)

50/155 Mbps

Higher speeds available upon request

LOAD BALANCING

- Round Robin
- Response Time
- Fastest Route

MANAGEMENT

- Policy Routing
- Basic Firewall
- Java interface
- Network configuration
- Emergency paging and e-mail alerts
- Automatic failover
- Speed Chart and Speed Meter
- SNMP Ready
- On Failure

SECURITY

- Inherent NAT-based Firewall
- Reverse Mapping

WARRANTY

- 1 year full hardware warranty
- Includes 90 days of free technical support

DIMENSIONS

- 4U industry standard rack-mount chassis - high reliability, fast cooling industrial design
- 7"H x 19"W x 17.8"D (17.78cm H x 42.26cm W x 45.212cm D)

WEIGHT

- 43 lbs (19.5kg)

NETWORK INTERFACE

- Four 10/100 BASE Fast Ethernet
- Fast Ethernet Fiber and Gigabit Ethernet upgrade available
- Additional WAN port(s) upgrade available

FatPipe MPVPN

Highest level of security, fault tolerance, and speed for Mission Critical VPNs

MAKE YOUR VPN 900% MORE SECURE,
AND 300% MORE REDUNDANT,
RELIABLE, AND FAST



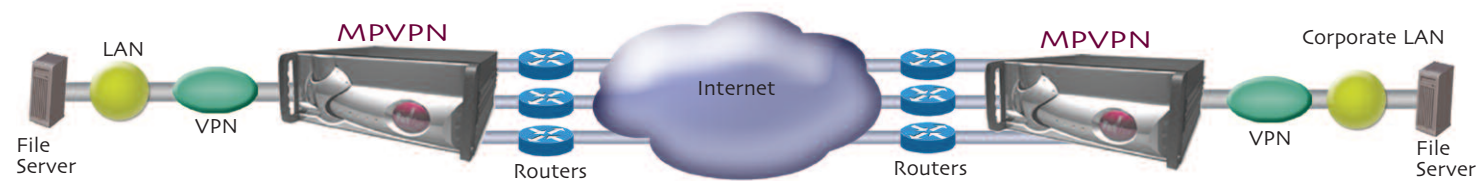
FatPipe Networks
4455 South 700 East, 1st Floor, Salt Lake City, Utah 84107
www.fatpipeinc.com • Info@fatpipeinc.com
Tel: 800.724.8521 • 801.281.3434 • Fax: 801.281.0317

©2007 FatPipe Networks. FatPipe, the FatPipe logo, FatPipe Networks™, MPVPN®, and MP5ec™ are trademarks or registered trademarks of Ragula Systems Development Company d.b.a. FatPipe Networks. All other product names mentioned herein are trademarks of their respective owners.

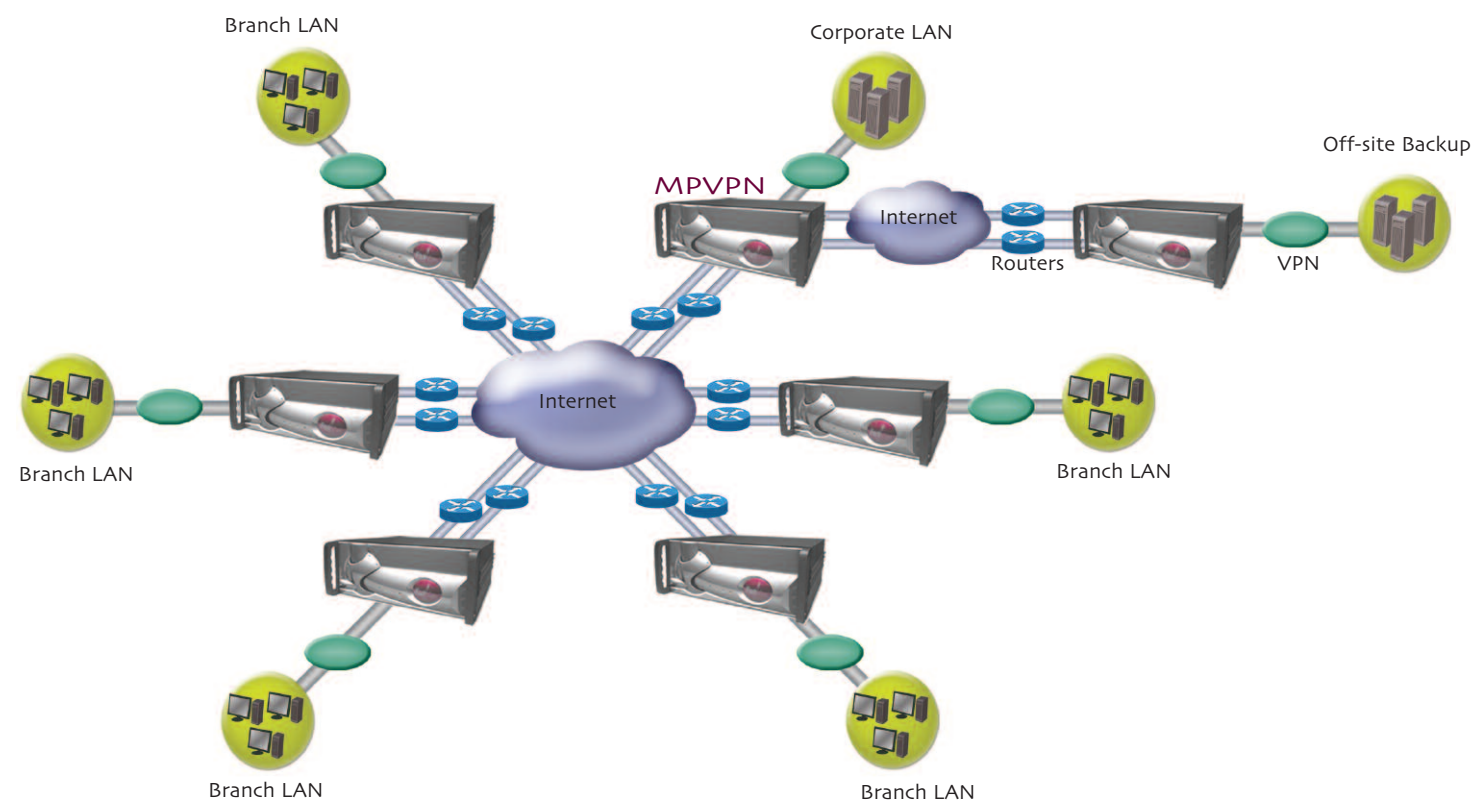
standard features
include Fault tolerance
for Remote VPN users &
Route Control Tools. Site
failover and site load
balancing also available!

MPVPN® takes any VPN and makes it up to 300% more reliable and redundant, 300% faster, and provides up to 900% more security for WAN data transmissions. MPVPN dynamically balances load over multiple lines and ISPs without the need for BGP programming. MPVPN can take WANs with an uptime of 99.5% or less and make them 99.999988% or higher, providing a virtually infallible WAN.

MPVPN provides customers with confidence that their VPNs will stay "up" at all times regardless of failures of the network's services or hardware.



Multiple Office Configuration



SECURITY, REDUNDANCY, RELIABILITY & SPEED FOR VPNS

Patented and additional patents pending. US Patent #6,493,341 B1; US Patent # 6,253,247 B1; US Patent #6,295,276; US Patent #6,775,235 B2

FatPipe Networks is the sole developer of patented router clustering technology specifically designed to provide high security, redundancy, reliability, and speed for Virtual Private Networks (VPNs). MPVPN® enables customers' mission critical VPNs to stay "up" at all times by transcending the failures of any WAN line, ISP, router or other individual hardware components. Security of data transmission is also increased up to 900% with FatPipe's patented MPSec™, which breaks each data stream down to the packet level, randomly sends the packets over multiple connections, and reassembles the packets at the receiving end. MPSec makes it virtually impossible for hackers or intruders to trap data and decrypt confidential information.

FEATURES & BENEFITS

- **MPSec™:** FatPipe's patented Multi-Path Security provides up to three times more security for VPN Traffic, making it virtually impossible to trap data flow and decrypt information in correct sequence.
- **Session or Packet Based Load Balancing:** Choose to keep inter-office traffic on a single MPSec path or spread them across multiple paths.
- **Fault Tolerance for Remote VPN Users:** FatPipe IPVPN uses an enhanced feature that provides redundancy for remote VPN clients using IPsec and PPTP as well as several other custom encryption algorithms, ensuring connectivity even when a WAN line fails
- **SmartDNS:** FatPipe's patent-pending technology intelligently balances load across all available lines and provides for redundancy of inbound IP traffic resulting in efficient delivery of information. New SmartDNS statistics are now available.
- **Inbound and Outbound Policy Routing:** Provides Administrators complete control over IP traffic delivery, allowing them to define routing criteria based on application and/or provider.
- **Powerful Load Balancing Methods:** Enhanced load balancing options as well as IPVPN peer traffic, including Weighted Load Balancing, Round Robin, Fastest Route, and Response Time.
- **Supports multi-homing connections over multiple lines** without ISP cooperation or expensive routers with programming capabilities.
- **Reverse Mapping:** Allows companies to conserve IP addresses and direct application traffic to specific servers.
- **Ability to see VPN status at all locations.**
- **Remote upgrade to obtain new features.**
- **Easy Installation:** No need to reset gateway IP address for client computers in a LAN when integrating MPVPN into a network, saving time and money.
- **Basic Firewall:** Firewall capabilities give users the option to Allow or Deny traffic matching an inbound or outbound policy rule.
- **Unit Failover:** An automatic unit failover option is available to customers that want a standby unit to backup the active MPVPN unit.
- **Time Settings** - Easy to configure Time Zone, Date, and Time settings that sync to standard NTP servers
- **Full WARP functionality:** MPVPN incorporates all of the features and benefits of FatPipe WARP.

AVAILABLE ADD-ON FEATURES & FUNCTIONS

- **QoS:** FatPipe Quality of Service (QoS) can help you optimize the efficiency of your Internet connection by providing tools to control congestion and prioritize data for inbound and outbound traffic. Now with Layer 7 QoS - This improvement allows classification of traffic based on applications that generate it.
- **Site Load Balancing:** Can enhance a company's disaster recovery solution as a tool to provide failover between two or more locations as well as site load balancing of IP traffic between two separate sites to maximize bandwidth performance.
- **Compression:** Data compression can be added on to MPVPN, increasing network capacity an average of three times. By compressing packet payload and eliminating redundant data traffic over a WAN, FatPipe's compression technology significantly increases a network's throughput providing real cost savings.
- **FatPipe VPN:** Allows you to configure VPN tunnels with any standard IPsec VPN peer. Now with the added benefit an easy interface to use for the configuration of VPN tunnels between FatPipe VPN and mobile VPN clients.
- **FatPipe VPN Site Failover :** enables failover of VPN traffic between branch office(s), main office and disaster recovery sites, utilizing all lines available at each site. Note that it requires the customer must already have the VPN client.
- **FatPipe Central Manager:** Manages all FatPipe devices from a single location.