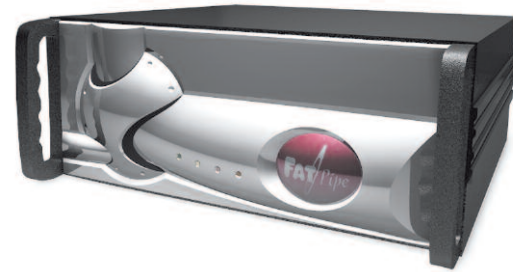


WARP

FatPipe WARP aggregates up to three DS3s (higher speeds available) over multiple ISPs and backbones or the same ISP with different POPs for the highest level of redundancy, reliability and speed of inbound and outbound Internet traffic over a Wide Area Network. WARP is perfect for mid-size ASPs, ISPs, and corporations that want redundant access to internal servers.

50/155 Mbps

Higher speeds available upon request



LOAD BALANCING

- Round Robin
- Response Time
- Fastest Route

MANAGEMENT

- Policy Routing
- Basic Firewall
- Java interface
- Network configuration
- Emergency paging and e-mail alerts
- Automatic failover
- Speed Chart and Speed Meter
- SNMP Ready
- On Failure

SECURITY

- Inherent NAT-based Firewall
- Reverse Mapping

WARRANTY

- 1 year full hardware warranty
- Includes 90 days of free technical support

DIMENSIONS

- 4U industry standard rack-mount chassis - high reliability, fast cooling industrial design
- 7"H x 19"W x 17.8"D (17.78cm H x 42.26cm W x 45.212cm D)

WEIGHT

- 43 lbs (19.5kg)

NETWORK INTERFACE

- Four 10/100 BASE Fast Ethernet
- Fast Ethernet Fiber and Gigabit Ethernet upgrade available
- Additional WAN port(s) upgrade available



FatPipe Networks
4455 South 700 East, 1st Floor, Salt Lake City, Utah 84107
www.fatpipeinc.com • Info@fatpipeinc.com
Tel: 800.724.8521 • 801.281.3434 • Fax: 801.281.0317

*2007 FatPipe Networks. FatPipe, the FatPipe logo, FatPipe Networks™, MPVPN®, and MPSec™ are trademarks or registered trademarks of Ragula Systems Development Company d.b.a. FatPipe Networks. All other product names mentioned herein are trademarks of their respective owners.

FatPipe WARP

Redundancy, Reliability, Speed, and Dynamic Load Balancing of Bidirectional Traffic

MAKE YOUR WAN 300% MORE REDUNDANT,
RELIABLE AND FAST FOR BIDIRECTIONAL IP
TRAFFIC



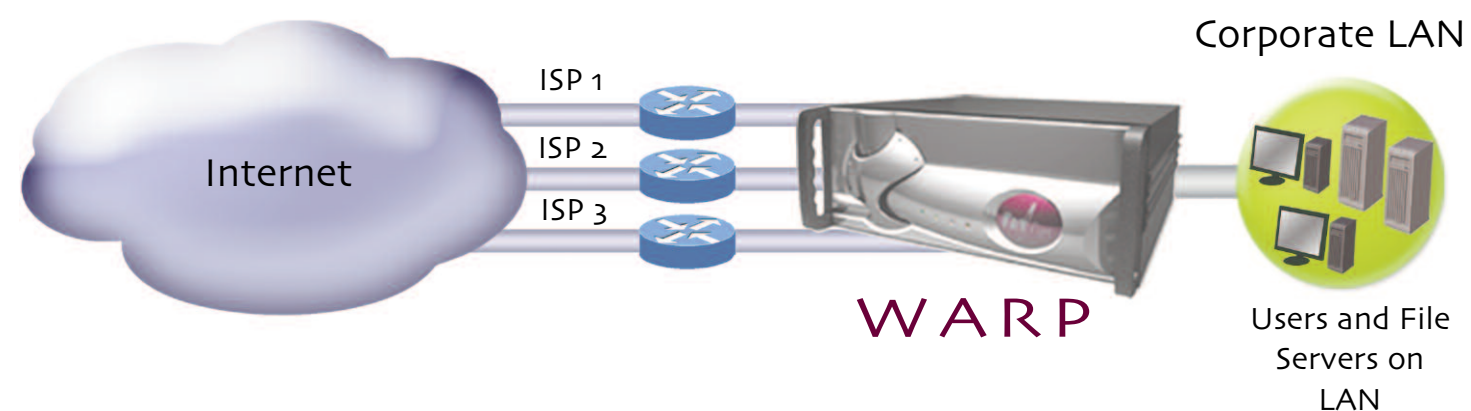
Feature add-ons
include QoS, Site
Load Balancing,
Central Manager
and VPN

FatPipe WARP is a router clustering device that combines multiple WAN connections of any kind over multiple backbones and ISPs (or the same ISP with different POPs), to provide the world's highest level of reliability and redundancy for inbound and outbound IP traffic. Companies can host servers internally with the highest degree of availability.

FatPipe WARP technology significantly enhances customers' ability to maintain the integrity of their Wide Area Networks (WANs). Basic product features such as dynamic load balancing and intelligent, automatic failover capabilities substantially increase the efficiency of their WANs.

Advanced product features include SmartDNS and Policy Routing. SmartDNS is a patent pending technology from FatPipe that efficiently balances inbound load over multiple lines and will intelligently sense when a line is down and reroute IP packets to available lines when a failure occurs to provide automatic failover.

Policy routing gives administrators more control over their networks, allowing them to define how they would like data to be transmitted over their networks based on protocol, source and destination IP address, and/or source and destination port.



REDUNDANCY, RELIABILITY, SPEED, AND BIDIRECTIONAL LOAD BALANCING

Patented and additional patents pending. US Patent #6,493,341 B1; US Patent # 6,253,247 B1; US Patent #6,295,276; US Patent #6,775,235 B2

FatPipe WARP is a low cost solution for companies that require high levels of redundancy and availability for their WAN networks as well as companies looking for maximum bandwidth utilization. Companies that host internal servers that are accessed from outside their LANs, such as web, Citrix®, email and database servers, require robust and redundant WANs to keep their business running and to avoid revenue and productivity losses due to Internet downtime.

WARP provides the highest level of fault tolerance for WAN infrastructures, ensuring that inbound and outbound traffic reach their destination even when an ISP or WAN component fails.

YOU CANNOT AFFORD TO GO DOWN

- Network outages and degradation cause significant losses in productivity and revenue, ranging up to 1%. A study of downtime at 85 large organizations (over 1,000 employees), found an average of over \$32 million in revenue and productivity losses. Source - Infonetics Research, The Cost of Downtime
- One third of U.S. businesses face the loss of critical data or operational capability in the wake of a disaster, unless investments toward disaster preparedness planning are made. Source - Gartner Group; U.S. Firms Unprepared for Disasters
- The growth of network complexity has produced many more potential points of degradation and failure. Source - Infonetics Research, The Cost of Downtime

FEATURES & BENEFITS

- Provides highly reliable and redundant access to internal servers including Citrix®, web, SCM, CRM, database and e-mail servers.
- **SmartDNS:** FatPipe's patent-pending technology intelligently balances load across all available lines and provides for redundancy of inbound IP traffic resulting in efficient delivery of information. New SmartDNS statistics are now available.
- **Powerful Load Balancing Methods:** Enhanced load balancing options as well as IPVPN peer traffic, including Weighted Load Balancing, Round Robin, Fastest Route, and Response Time.
- **Inbound Policy:** Allows companies to conserve IP addresses and direct application traffic to specific servers.
- Aggregates multiple connections of similar or dissimilar speeds without BGP programming.
- Supports multi-homing connections over multiple lines without ISP cooperation or the need for expensive routers.
- Enhanced support for PPPoE connections.
- **Route Test on primary failure** - Route Test now has the option to run a route test on back up lines only when the primary interface is down.
- Fully supports Simple Network Management Protocol (SNMP) MIB-II.
- **Policy Routing:** Provides Administrators complete control over IP traffic delivery, allowing them to define routing criteria based on application and/or provider and now within user-defined time frames. Users can schedule to activate or disable policy routes at specified times and days of the week.
- **Easy Installation:** No need to reset gateway IP addresses for client computers in a LAN when integrating WARP into your network saving time and money.
- **Unit Failover:** An automatic unit failover option is available to customers that want a standby unit to backup the active WARP unit.
- **Basic Firewall:** Allows administrators to block any inbound and outbound traffic.
- **Time Settings** - Easy to configure Time Zone, Date, and Time settings that sync to standard NTP servers

AVAILABLE ADD-ON FEATURES & FUNCTIONS

- **QoS:** FatPipe Quality of Service (QoS) can help you optimize the efficiency of your Internet connection by providing tools to control congestion and prioritize data for inbound and outbound traffic. Now with Layer 7 QoS - This improvement allows classification of traffic based on applications that generate it.
- **Site Load Balancing:** Can enhance a company's disaster recovery solution as a tool to provide failover between two or more locations as well as site load balancing of IP traffic between two separate sites to maximize bandwidth performance.
- **FatPipe VPN:** Allows you to configure VPN tunnels with any standard IPsec VPN peer. Now with the added benefit an easy interface to use for the configuration of VPN tunnels between FatPipe VPN and mobile VPN clients.
- **FatPipe Central Manager:** Manages all FatPipe devices from a single location.