

# XTREME SUPERSTREAM

XTREME and SUPERSTREAM provide the ideal solution for companies that want the highest levels of WAN redundancy, reliability and speed for Internet connections for IP traffic directed from the network to the Internet.

## SUPERSTREAM 2 Mbps

### LOAD BALANCING

- Round Robin
- On Failure
- Response Time
- Fastest Route

### MANAGEMENT

- Policy Routing
- Java Interface
- Network configuration
- Emergency paging and e-mail alerts
- Automatic failover
- Speed Chart and Speed Meter
- SNMP Ready

### SECURITY

- Inherent NAT-based Firewall
- Reverse mapping

### WARRANTY

- 1 year full hardware warranty
- Includes 90 days of free technical support

### DIMENSIONS

- 2.75"Hx12.5"Wx10.75"D (per unit) 1U Industry standard chassis

### WEIGHT

- 24.5 lbs (per unit)

### NETWORK INTERFACE

- Four 10/100 BASE Fast Ethernet (Two enabled and two disabled)

## XTREME 50 Mbps

### LOAD BALANCING

- Round Robin
- On Failure
- Response Time
- Fastest Route

### MANAGEMENT

- Policy Routing
- Java Interface
- Network configuration
- Emergency paging and e-mail alerts
- Automatic failover
- Speed Chart and Speed Meter
- SNMP Ready

### SECURITY

- Inherent NAT-based Firewall
- Reverse mapping

### WARRANTY

- 1 year full hardware warranty
- Includes 90 days of free technical support

### DIMENSIONS

- 7"Hx19"Wx17.8"D (per unit) 4U Industry standard rack-mount chassis

### WEIGHT

- 43 lbs (per unit)

### NETWORK INTERFACE

- Four 10/100 BASE Fast Ethernet
- Additional WAN ports available



FatPipe Networks  
4455 South 700 East, 1st Floor, Salt Lake City, Utah 84107  
www.fatpipeinc.com • Info@fatpipeinc.com  
Tel: 800.724.8521 • 801.281.3434 • Fax: 801.281.0317

©2006 FatPipe Networks. FatPipe, the FatPipe logo, FatPipe Networks™, SYMPHONY™, and MP5ec™ are trademarks or registered trademarks of Ragula Systems Development Company d.b.a. FatPipe Networks. All other product names mentioned herein are trademarks of their respective owners.

# FatPipe XTREME/SUPERSTREAM

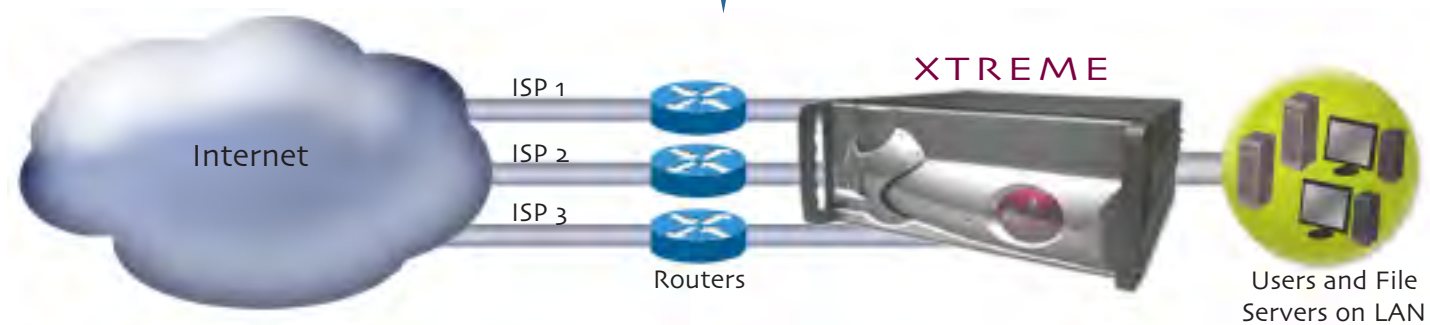
Fault Tolerant, High Speed Mission Critical Internet/WAN Access

MAKE YOUR WAN 300% MORE  
REDUNDANT, RELIABLE AND FAST FOR  
INTERNET AND WAN ACCESS

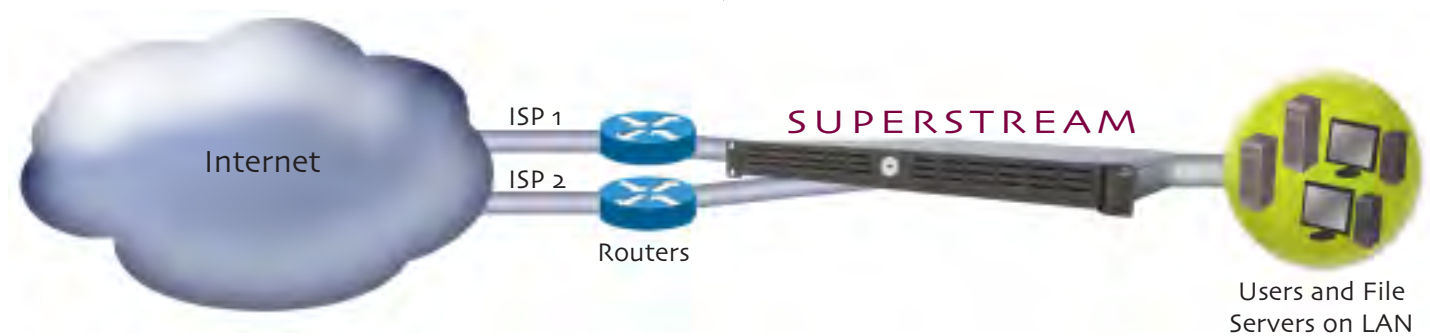


Works with any  
combination of DS3,  
T1, DSL, Wireless,  
ISDN, and/or cable  
Routers

XTREME is perfect for companies that require redundancy and dynamic load balancing for outbound Internet traffic. FatPipe XTREME aggregates multiple lines over multiple ISPs and backbones without requiring any BGP programming.



SUPERSTREAM has similar features and benefits as the FatPipe XTREME product, but in a compact 2 Mbps size to meet the needs of smaller companies and branch offices. Use SUPERSTREAM to aggregate two connections of any type of media (T1, DSL, Cable, Wireless, and/or ISDN) for increased WAN speed and reliability. Two additional WAN ports can be enabled for up to four connections.



# REDUNDANCY, RELIABILITY, SPEED, & OUTBOUND LOAD BALANCING

XTREME and SUPERSTREAM provide the ideal solution for companies that want the highest levels of WAN redundancy, reliability and speed for Internet connections for IP traffic directed from the network to the Internet.

Companies incorporate FatPipe XTREME or SUPERSTREAM into their networks to achieve redundancy, speed and dynamic load balancing for their WANs, especially for outbound Internet access. Examples include companies that use the Internet to connect to application servers in remote locations, such as branch offices accessing servers located at a headquarter's site, or companies that employ thin client or use ASP services.

## YOU CANNOT AFFORD TO GO DOWN

- Network outages and degradations are causing significant losses in productivity and revenue, ranging from less than 1/10th of 1% of total revenue to almost 1% (up to \$74.6 million per year). Infonetics Research, The Cost of Downtime
- One third of U.S. businesses face the loss of critical data or operational capability in the wake of a disaster, unless investments toward disaster preparedness planning are made. Gartner Group; U.S. Firms Unprepared for Disasters
- The growth of network complexity has produced many more potential points of degradation and failure. Infonetics Research, The Cost of Downtime
- **FatPipe's patented RAIL technology** intelligently balances load, choosing the fastest connection available for outbound traffic.
- **Bonds multiple connections** of similar or dissimilar speeds without BGP programming.
- **Policy Routing** allows administrators to manage traffic and set rules for routing based on source and destination port numbers and IP addresses.
- **Emergency paging and e-mail** notification for administrators.
- **Diagnostic tools** to identify and resolve issues.
- **Web-based management** tools for remote management are available when enabled by an administrator.
- **FatPipe's Proxy ARP** feature allows administrators to integrate XTREME or SUPERSTREAM into their networks without having to change gateway IP addresses on client computers saving time and money.
- **Unit Failover** An automatic unit failover option is available to customers that want a standby unit to backup the active unit.

WITH FATPIPE XTREME/SUPERSTREAM	WITHOUT FATPIPE XTREME/SUPERSTREAM
<ul style="list-style-type: none"><li>• No BGP programming</li><li>• Highest redundancy and reliability</li><li>• Combines multiple connections for up to 3X the speed</li><li>• Browser-based management tools and access controls</li><li>• Emergency e-mail and paging alerts</li><li>• Standard features include auto failover, dynamic load balancing, and Policy Routing</li><li>• Remote reboot</li></ul>	<ul style="list-style-type: none"><li>• BGP programming required</li><li>• No protection for ISP, backbone, router or line failure</li><li>• Speed limited to single line speed</li><li>• Cannot monitor speed of router; administrators must be on site to implement or monitor changes and to service the equipment</li><li>• Need to purchase additional software</li><li>• No failover and/or load balancing options</li><li>• Must be on site to reboot</li></ul>